

Advanced, precision toasting for a wide variety of breads

CTS
Contact Toaster Single Sided



The CTS contact toaster from Prince Castle offers advanced toasting capabilities thanks to its leading-edge heating technology. With its dual-platen system and adjustable settings, it effortlessly handles a wide range of thick and thin breads, delivering the consistent results Prince Castle is known for.



Adjustable Settings

Customize toast speeds and temperatures



Even Compression

Two-level platen ensures even caramelization for wide range of bread types



Toasting consistency

Heavy-duty platen retains heat, ensuring perfect toast all day



Flexible Belt Options

Wire and silicone belts for maximum flexibility



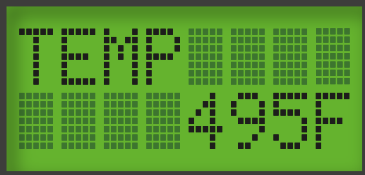
Easy-to-Use Interface

One-touch LCD screen for seamless operation

Product Highlights

CTS

The CTS is a versatile toaster built to handle a wide range of thick and thin breads with precision, making it the perfect solution for flexible menu demands.



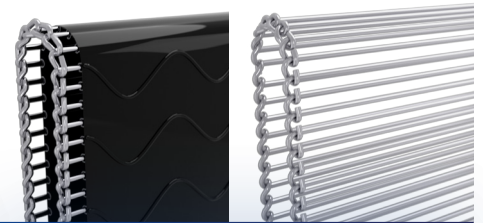
Customizable toasting
Adjustable speeds and temperatures.

1



Easy to use
A simple interface made easy by convenient digital commands.

2



Two belt options
Wire or silicone belts for maximum flexibility.

3

ELEVATE QUALITY AND REDUCE WASTE

- Advanced heating technology ensures precision toasting and reduces waste during peak demand.
- Adjustable compression avoids bun marking and reduces waste.
- Dual-level platen provides even caramelization for thick and thin breads.
- Consistent results across a wide variety of bread types maintain customer satisfaction.
- Durable design ensures reliable performance in demanding environments.
- Silicone and wire belts also available.

SIMPLIFIED OPERATIONS

- LCD screen enables seamless operation and quick setting adjustments.
- User-friendly design simplifies staff training, reducing onboarding time.
- Fits seamlessly into any kitchen workflow.

MENU FLEXIBILITY

- Adjustable toasting times (9-40 seconds) allow peak customization for diverse needs.
- Adjustable temperature settings accommodate a variety of bread carriers, from artisan breads, bagels and buns, to specialty items.

EASY TO CLEAN

- Stainless steel construction allows for quick, hassle-free cleaning.
- Non stick release sheets prevent residue build-up ensuring lasting, optimal toaster performance.
- Removable conveyor belts simplifies cleaning and maintenance.
- Easy access to components minimizes downtime.

SUSTAINABILITY

- Durable components minimize replacements and reduce costs.
- Minimal use of consumables support eco-friendly operations.
- Heat-shield design ensures cooler surfaces while enhancing energy efficiency.



Technical Specifications

CTS - Contact Toaster Single Sided

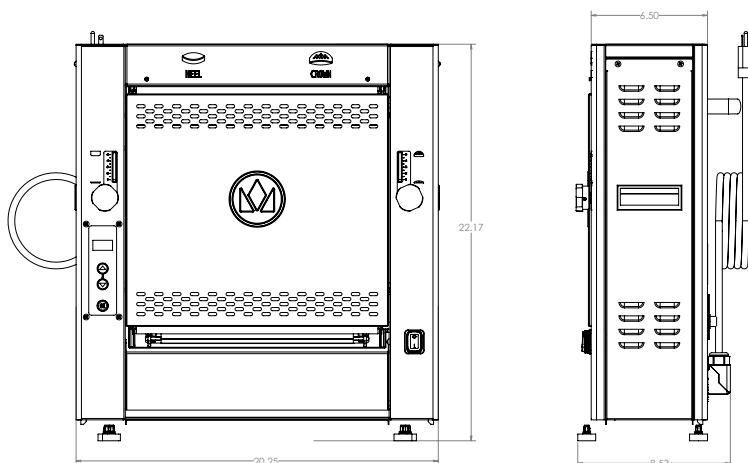
Output & Electrical

Model N°	Description	Volts	Hz	Watts	Amps	Plug	Temperature range	Bread diameter	Variable speed	Pass through time	Belt
CTS-W	Toaster Wire belt	115	60	1550	15.5	NEMA 5-15P	100-550°F 38-288°C	5.5" 14cm	Yes	9-40 sec	Wire
CTS-WCE	Toaster Wire belt, CE	200-240	50/60	1350-1800	6.25	CEE 7.7 Plug	100-550°F 38-288°C	5.5" 14cm	Yes	9-40 sec	Wire
CTS-WS	Toaster Silicone belt	115	60	1550	15.5	NEMA 5-15P	100-550°F 38-288°C	5.5" 14cm	Yes	9-40 sec	Silicone

Product Dimensions + Weight

Width	20.3" (51,4cm)
Depth	6.5" (16,5cm)
Height	22.2" (56,4cm)
Unit Weight	65 lbs (29,5kg)
Shipping Weight	68 lbs (31kg)

Specifications



Accessories

Model Number	Description
511-140	Butter Wheel
299-061S	Release Sheet Kit
299-063S	Silicone Belt

Belt Options



Silicone

Wire

Certifications



Whatever your needs, we've got the right solution for every toasting occasion.



Model	297-T9	297-T12P	297-T20	CTS	CTD	CTDE
Toaster Style	Contact, Continuous	Contact, Continuous	Contact, Continuous	Contact, Continuous	Contact, Continuous	Contact, Continuous
Unit Dimensions						
Width (in)	25.0"	25.0"	25.0"	20.3"	12.0"	17.5"
Depth (in)	8.2"	8.2"	8.2"	8.5"	10.8"	10.8"
Height (in)	26.3"	26.3"	26.3"	22.2"	21.3"	21.3"
Net Weight (lbs.)	71 lbs.	71 lbs.	71 lbs.	65 lbs.	51 lbs.	70 lbs.
Shipping Dimensions						
Width (in)	26.0"	26.0"	26.0"	24.5"	16.5"	21.8"
Depth (in)	12.2"	12.2"	12.2"	13.0"	16.3"	15.8"
Height (in)	27.6"	27.6"	27.6"	27.0"	28.3"	21.1"
Shipping Weight (lbs.)	82 lbs.	82 lbs.	82 lbs.	68 lbs.	56 lbs.	75 lbs.
Bun Specifications						
Bread Diameter (in)	5.5"	5.5"	5.5"	5.5"	5.5"	5.5"
Crown Min (in)	0.75"	0.75"	0.75"	0.5"	0.4"	0.4"
Crown Max (in)	1.25"	1.25"	1.25"	1.25"	1.25"	1.25"
Heel Min (in)	0.5"	0.5"	0.5"	0.3"	0.3"	0.3"
Heel Max (in)	1.0"	1.0"	1.0"	1.0"	1.0"	1.0"
Buns per Hour	2,400/hr	2,400/hr	2,400/hr	1,200/hr	1,200/hr	2,400/hr
Product Specifications						
Platen	Single Sided	Single Sided	Single Sided	Single Sided	Dual Sided	Dual Sided
Belt	Wire	Wire	Wire	Wire, Silicone	Silicone	Wire, Silicone, Stainless steel
Variable Speed	No	No	No	Yes	Yes	Yes
Temp Range	370-570°F	370-570°F	370-570°F	100-550°F	100-550°F	100-550°F
Pass Through Time	9 sec	12 sec	20 sec	9-40 sec	6-40 sec	6-40 sec
Volts	115V	115V	115V	115V	208-240V	208-240V
Hertz	60 Hz	60 Hz	60 Hz	60 Hz	60 Hz	60 Hz
Watts	1550W	1550W	1550W	1550W	1700-2250W	2440-3250W
Amps	15.5	15.5	15.5	15.5	8.1-9.4	11.7-13.5
Plug	NEMA 5-15P	NEMA 5-15P	NEMA 5-15P	NEMA 5-15P	NEMA L6-20P	NEMA L6-20P
Warranty	1-Year Parts & Labor	1-Year Parts & Labor	1-Year Parts & Labor	1-Year Parts & Labor	1-Year Parts & Labor	1-Year Parts & Labor
Accessories	Butter Wheel, Release Sheet Kit	Butter Wheel, Release Sheet Kit	Butter Wheel, Release Sheet Kit	Butter Wheel, Release Sheet Kit Silicone Belt	Butter Wheel, Release Sheet Kit Silicone Belt	Butter Wheel (Wire/Silicone only), Release Sheet Kit; Silicone Belt
Agency Listings	UL Safety, UL Sanitation, CE, EAC, UKCA	UL Safety, UL Sanitation, CE, EAC	UL Safety, UL Sanitation, CE, EAC	UL Safety, UL Sanitation, CE, EAC, UKCA	ELT Safety, ELT Sanitation, CE, EAC, UKCA	ELT Safety, ELT Sanitation, CE, EAC, UKCA

PRINCECASTLE

The perfect toast, every time.



To learn more about Prince Castle toasters, visit princecastle.com
To contact a Prince Castle representative, go to princecastle.com/contact/

355 E. Kehoe Blvd.
Carol Stream, IL 60188
1.800.PCASTLE • 1.800.722.7853 - 630.462.8800



Marmon Foodservice
Technologies

A Berkshire Hathaway Company