

## Double your food's hold times safely, without sacrificing quality or flavor.

**Vibrant LCD touchscreen** is easy to use and can be seen across the kitchen, allowing crew to quickly determine food status.

**2X hold times** with patented dual-zone temperature controls.



**Keep fried foods crispy** and cooked foods tender with patented dual-zone temperature controls.

**Timers** notify crew when to cook more and color codes show which items to serve first.

### Elevate Quality and Reduce Waste

- LCD Touchscreen with color-coded timers indicate the time remaining on products to ensure crew use first in first out method.
- Cook more alert notifies crew to avoid running out of food.
- Patented dual-zone temperature controls create the perfect holding environment allowing you to hold your food twice as long.

### Menu Flexibility

- Dedicated pans to keep fried foods crispy and cooked foods moist.
- 6 dayparts, 36 menu pre-sets.
- Easy-to-update recipe names, heater temps, cook/cook more times, and dayparts.
- Support for English and Spanish languages.

### Diagnostics Increase Serviceability

- Trouble-shooting error codes are automatically recorded to speed up trouble-shooting and servicing.

### USB Port

- Quick and easy software updates.

### Simplified Crew-Friendly Operations

- Intuitive iconographic controls are easy to use and eliminates language barriers.
- Colorful display can be seen from across the kitchen, allowing crew to quickly determine the food status.
- Manager passcode prevents unwanted or accidental setting changes.

### 50% More Holding Capacity

- Three 4" pans hold 50% more protein than standard 2 1/2" pans. Hold up to 9 different items at the same time.

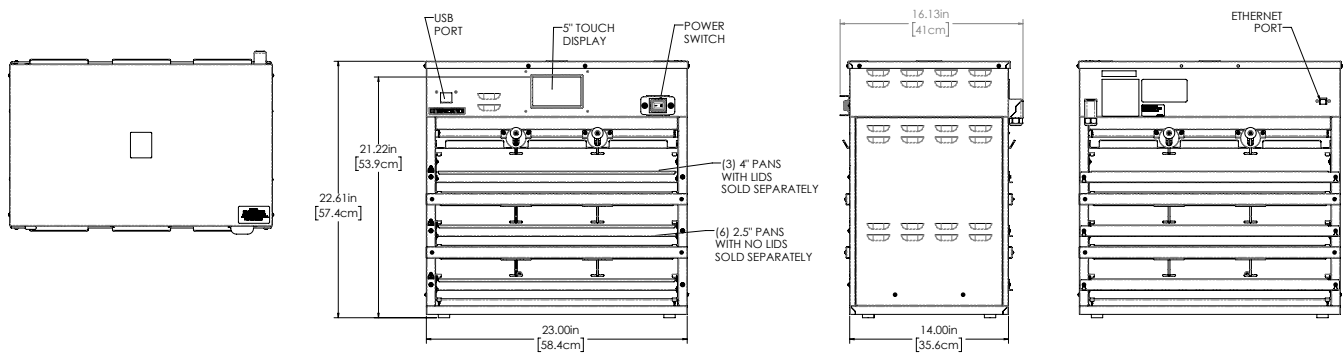
### Easy To Clean

- Simple daily wipe-down.
- No difficult-to-clean crevasses or corners.

### Durable Construction


- Minimize grease and heat migration from durable steel construction.
- Longer control board life cycles with enhanced protection.
- Easily convert unit to a full pass through bin.
- Counter top depth savings with angled power cord.

Whether it's crispy chicken or juicy burgers, you can now hold your food **2X longer** without sacrificing quality or flavor, thanks to Prince Castle's **patented dual-zone temperature controls.**



## Technical Specification

<b>Product Category</b>	Product Holding Bin
<b>Product Dimensions</b>	19.2"W x 16.9"D x 26.8"H (48.7cm x 42.9cm x 68.1cm)
<b>Power Requirements</b>	120/1/60 Voltage/Ph/Hertz, 1920 Watts, 5-20P
<b>Capacity</b>	(3) 4" deep pans w/lids (6) 2.5" pans w/no lids
<b>Exterior Construction</b>	Stainless Steel
<b>Unit Weight</b>	65 lbs. (39 kg)

<b>Shipping Weight</b>	86 lbs (36 kg)
<b>Shipping Dimensions</b>	27-1/8"L x 22-1/8"W x 26-5/8"H (68.9cm x 56.2cm x 67.6cm)
<b>Warranty</b>	1-Year: Parts & Labor
<b>Agency Listing</b>	

Model Number	Description	Voltage	Ph	Hertz	Power	Plug Style
PHB33NI-GMS02	HOLDING BIN PHB-GMS 3x3	115	1	60	1920 Watts	5-20P

\* Pans & Trivets sold separately



To learn more about **Prince Castle PHB33** or to contact a Prince Castle representative, go to [princecastle.com](http://princecastle.com).